



**REGIONAL SPECIALISED METEOROLOGICAL CENTRE-TROPICAL CYCLONES, NEW DELHI
TROPICAL WEATHER OUTLOOK**

DEMS-RSMC TROPICAL CYCLONES NEW DELHI DATED 02.06.2024

TROPICAL WEATHER OUTLOOK FOR NORTH INDIAN OCEAN (THE BAY OF BENGAL AND THE ARABIAN SEA) VALID FOR NEXT 168 HOURS ISSUED AT 0600 UTC OF 02.06.2024 BASED ON 0300 UTC OF 02.06.2024.

BAY OF BENGAL:

YESTERDAY'S CYCLONIC CIRCULATION OVER EASTCENTRAL ADJOINING SOUTHEAST BAY OF BENGAL NOW LIES OVER EASTCENTRAL BAY OF BENGAL BETWEEN 3.1 & 5.8 KM ABOVE MEAN SEA LEVEL TILTING SOUTHWESTWARDS WITH HEIGHT PERSISTS AT 0300 UTC OF TODAY'S, 2ND JUNE, 2024

YESTERDAY'S CYCLONIC CIRCULATION OVER COASTAL ANDHRA PRADESH & NEIGHBOURHOOD NOW LIES OVER WESTCENTRAL ADJOINING SOUTHWEST BAY OF BENGAL OFF SOUTH COASTAL ANDHRA PRADESH-NORTH TAMIL NADU COASTS AT 1.5 KM ABOVE MEAN SEA LEVEL AT 0300 UTC OF TODAY'S, 2ND JUNE, 2024.

SCATTERED TO BROKEN LOW AND MEDIUM CLOUDS WITH EMBEDDED INTENSE TO VERY INTENSE CONVECTION LAY OVER SOUTH, CENTRAL & NORTHEAST BAY OF BENGAL, ANDAMAN SEA, GULF OF MARTABAN & ARAKAN COAST (MINIMUM CTT MINUS 85-93 DEG CEL). SCATTERED LOW AND MEDIUM CLOUDS WITH EMBEDDED MODERATE TO INTENSE CONVECTION LAY OVER REST BAY OF BENGAL.

***PROBABILITY OF CYCLOGENESIS (FORMATION OF DEPRESSION) DURING NEXT 168 HRS:**

24 HOURS	24-48 HOURS	48-72 HOURS	72-96 HOURS	96-120 HOURS	120-144 HOURS	144-168 HOURS
NIL	NIL	NIL	NIL	NIL	NIL	NIL

***NOTE: EVERY 24HR FORECAST IS VALID UPTO 0300 UTC (0830 IST) OF NEXT DAY**

ARABIAN SEA:

YESTERDAY'S CYCLONIC CIRCULATION OVER SOUTHEAST ARABIAN SEA OFF SOUTH KERALA BETWEEN 5.8 & 7.6 KM ABOVE MEAN SEA LEVEL HAS BECOME LESS MARKED AT 0300 UTC OF TODAY'S, 2ND JUNE, 2024.

SCATTERED LOW AND MEDIUM CLOUDS WITH EMBEDDED INTENSE TO VERY INTENSE CONVECTION LAY OVER EASTCENTRAL ARABIAN SEA ADJOINING LAKSHADWEEP ISLANDS AREA OFF KERALA COAST, COMORIN AREA & MALDIVES AREA (MINIMUM CTT MINUS 80-93 DEG CEL). SCATTERED LOW AND MEDIUM CLOUDS WITH EMBEDDED MODERATE TO INTENSE CONVECTION LAY OVER SOUTHEAST ARABIAN SEA.

***PROBABILITY OF CYCLOGENESIS (FORMATION OF DEPRESSION) DURING NEXT 168 HRS:**

24 HOURS	24-48 HOURS	48-72 HOURS	72-96 HOURS	96-120 HOURS	120-144 HOURS	144-168 HOURS
NIL	NIL	NIL	NIL	NIL	NIL	NIL

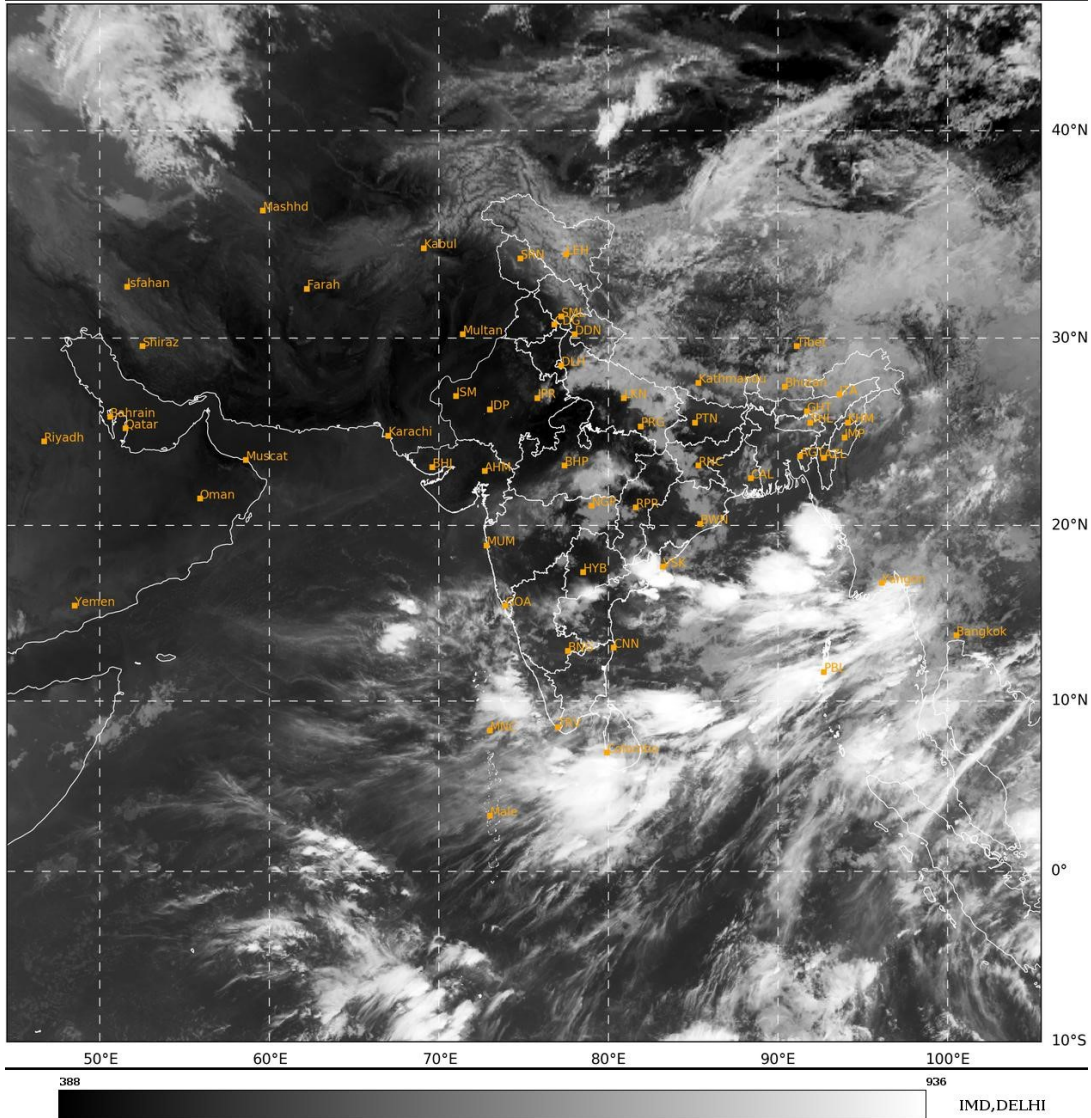
***NOTE: EVERY 24HR FORECAST IS VALID UPTO 0300 UTC (0830 IST) OF NEXT DAY**

REMARKS:

NIL

SAT : INSAT-3D IMG
 IMG_TIR1 10.8 um
 LIC Mercator

02-06-2024/(0300 to 0326) GMT
 02-06-2024/(0830 to 0856) IST



Cloud distribution: (a) Isolated: <25%, Scattered:25-50%, Broken: 51-75%, Solid:>75%, Convection Intensity: (a) Weak: Cloud Top Temperature (CTT) >-25°C, (b) Moderate: CTT: - 25°C to -40°C, (c) Intense: CTT: - 41°C to -70°C and (d) Very Intense: : Less than -70°C
PROBABILITY OF CYCLOGENESIS (FORMATION OF DEPRESSION):NIL: 0%, LOW: 1-33%, , MODERATE: 34-66% AND HIGH: 67-100%
 This is a guidance Bulletin for WMO/ESCAP Panel Member countries. Visit respective National websites for Country specific Bulletins